

The Farm Security Administration Photographic Project



The photographs of the Farm Security Administration - Office of War Information Photograph Collection form an extensive pictorial record of American life between 1935 and 1944. This U.S. government photography project was headed for most of its existence by Roy E. Stryker, formerly an economics instructor at Columbia University, and employed such photographers as Walker Evans, Dorothea Lange, Russell Lee, and other notable photographers.



The project was meant to document the workings of several federal government programs, including loans made to individual farmers by the Resettlement Administration and the construction of planned suburban communities. The second stage focused on the lives of sharecroppers in the South and migratory agricultural workers in the mid-western and western states.

The federal government wanted to portray the success of the New Deal programs as a way to create positive public opinion. As the scope of the project expanded, the photographers turned to recording both rural and urban conditions throughout the United States as well as mobilization efforts for World War II.

In 1940, one of these photographers, Russell Lee, visited Santa Clara and surrounding areas to document living conditions of this rural area. This album consists of those photographs taken



of local people, and provides a nostalgic look at rural life in 1940 Santa Clara. The images taken during this project are now held in the Library of Congress, and are accessible to the public.

It is fitting to begin this album with the portraits of **Barbara Staheli Graf** who was the first child born in Santa Clara to the group of Swiss Settlers. She was born on December 25, 1861 in the original fort. Her family had to evacuate the fort when the settlement was flooded soon after her birth. She passed away in 1943 at age 81.

In the picture below, Mrs. Graf is shown sitting below a family portrait, a picture of her parents, George and Sophia Staheli, and a portrait of her husband, Johann Heinrich Graf.



Mrs. Graf's home was originally moved from Silver Reef in 1885, and remained occupied until her daughter, Amanda's, death in 1966. The home was restored in 2003 by the Frei family.

The Santa Clara School in 1940.



Russell Lee. Santa Clara, Utah, October-November 1940. Mormon school in session (37897-D).

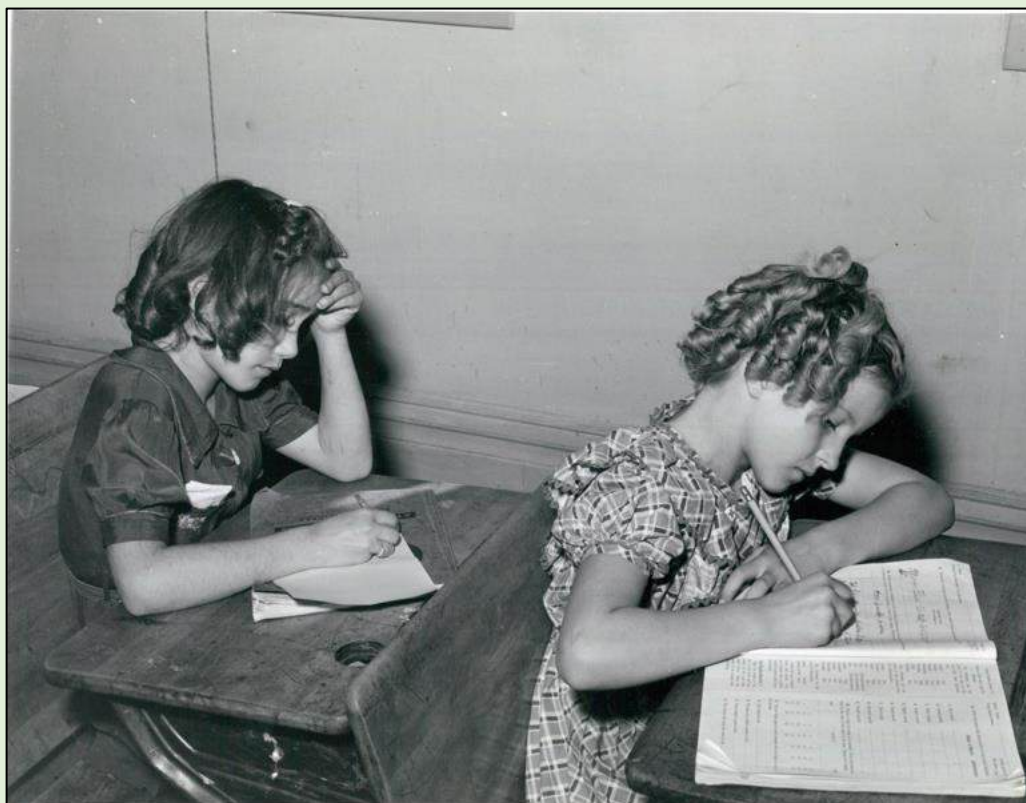
The school had 3 classrooms and a large meeting room upstairs. First and second grades occupied one classroom, third and fourth grades another, and fifth and sixth grades the third.

In the photo to the left, J. Claude Frei, standing at the back, was the principal of the school and the teacher of fifth and sixth grades.

Mr. Frei is helping student Dorothy Frei in the photo to the right.



Below, students Deloris Frei and Edna Gubler are working on their assignments.





Layne Frei (left) and
Ronald Mason (right)



Marion Gubler (back left), Erwin Moss (back center) and Don Dee Gates (back right)
Douglas Hafen, (front left) and Kay Stucki (front right)



Phyllis Frei and Janine Reber (back)
and Glen Jay Gubler (front)



Janine Reber, Phyllis Frei, Ronald Leavitt, Layne Frei and Ronald Mason



Glenna Tobler Hafen, wife of Clair Hafen, darning a sock.

Below, Glenna Hafen is shown with three of her children, Arlen (baby) Sherman and Kent.





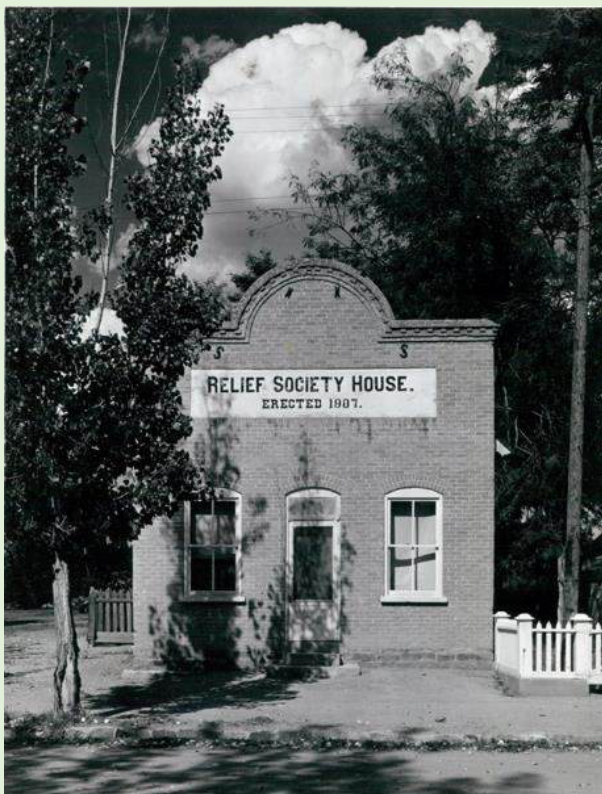
Sherman and Douglas Hafen paying marbles on the rug.



Glenna with Douglas, Miriam, Arlen, Sherman and Kent



Officers of the Women's Welfare Society (aka Relief Society) Nellie McArthur Gubler, left, Grace Staheli Stucki, Selina Gubler Hafen, and Leda Hafen Frei



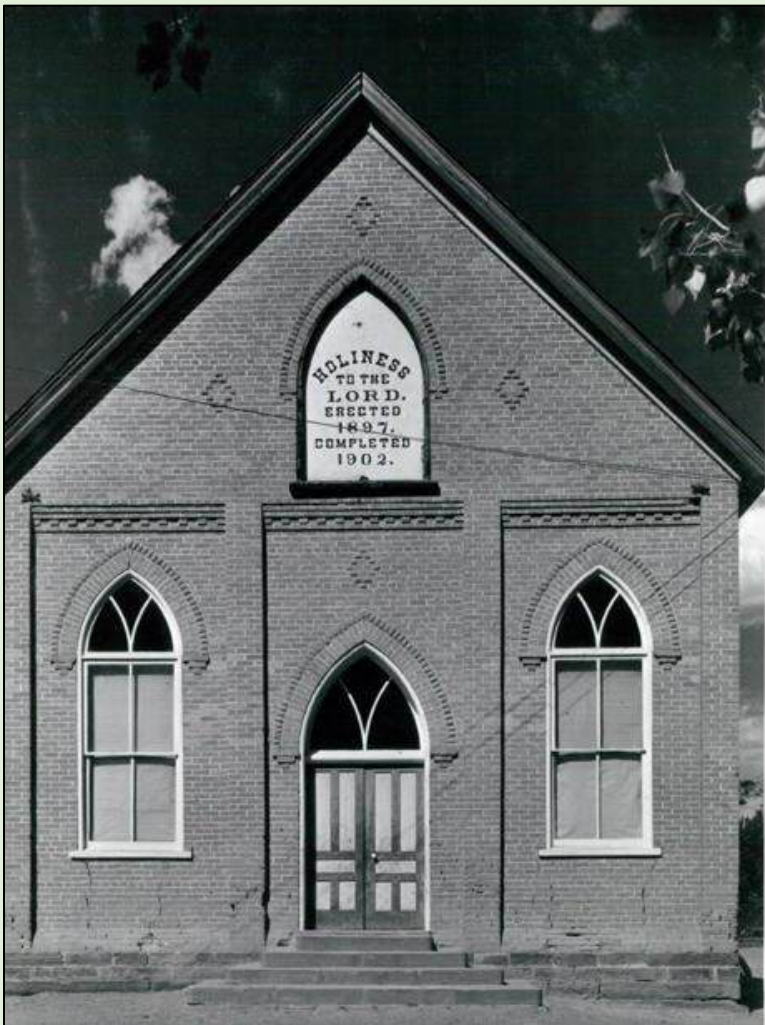
The Relief Society House in 1940.



Front row: Fern Reber Stucki, Freda Reber Stucki, Leona Ray, Golda ReberWittwer
Second row: Vanola Gubler Wittwer (with baby), Vella Morris Hafen, LaVaun Tobler Gubler (baby)
Vivian Tobler Graff, Esther Gubler
Third row: Unknown



Leda Hafen Frei mending an article of clothing. Mending clothing was a common task for home makers, keeping their family's all in one piece.



The chapel of the Church of Jesus Christ of Latter-Day Saints in 1940. The church stood next to the Santa Clara School.

This building was replaced in 1948 with a red-brick structure which still stands today (2024) in an expanded version.

Southern Utah Produce Company was owned by several Santa Clara families, and operated in the town. The location shown below, located next to the Santa Clara Mercantile. This location was where the post office was housed in the 1960s.





Above, Landon Frei and below right, Landon Frei and Glen Leavitt

Below, Clauson Frei replaces a horse's shoe.



Below, a man (possibly Clement Gubler) carrying a load of sugar cane,



Below, and a molasses-making operation



A view of the Santa Clara River (Creek)



The dam on the Santa Clara River (Creek)



This barn was identified as belonging to either Clair Hafen or to Arlo Hafen.



The road (Highway 91) going out of Santa Clara, up the hill toward Ivins

